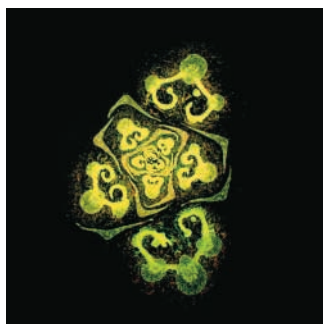


Corrections

Volume 14, No. 8, On the Cover: The cover image shows a transverse section, not a radial section.



Dietmar Geiger, Dirk Becker, Benoit Lacombe, and Rainer Hedrich. (2002). Outer Pore Residues Control the H⁺ and K⁺ Sensitivity of the Arabidopsis Potassium Channel AKT3. *Plant Cell* **14**, 1859–1868.

On page 1862, Ser-289, H228D-S289E, and S289E should be Ser-271, H228D-S271E, and S271E, respectively.

Antje Rohde, Els Prinsen, Riet De Rycke, Gilbert Engler, Marc Van Montagu, and Wout Boerjan. (2002). PtABI3 Impinges on the Growth and Differentiation of Embryonic Leaves during Bud Set in Poplar. *Plant Cell* **14**, 1885–1901.

In Figures 3 and 5D to 5G, transverse sections were incorrectly referred to as radial sections.

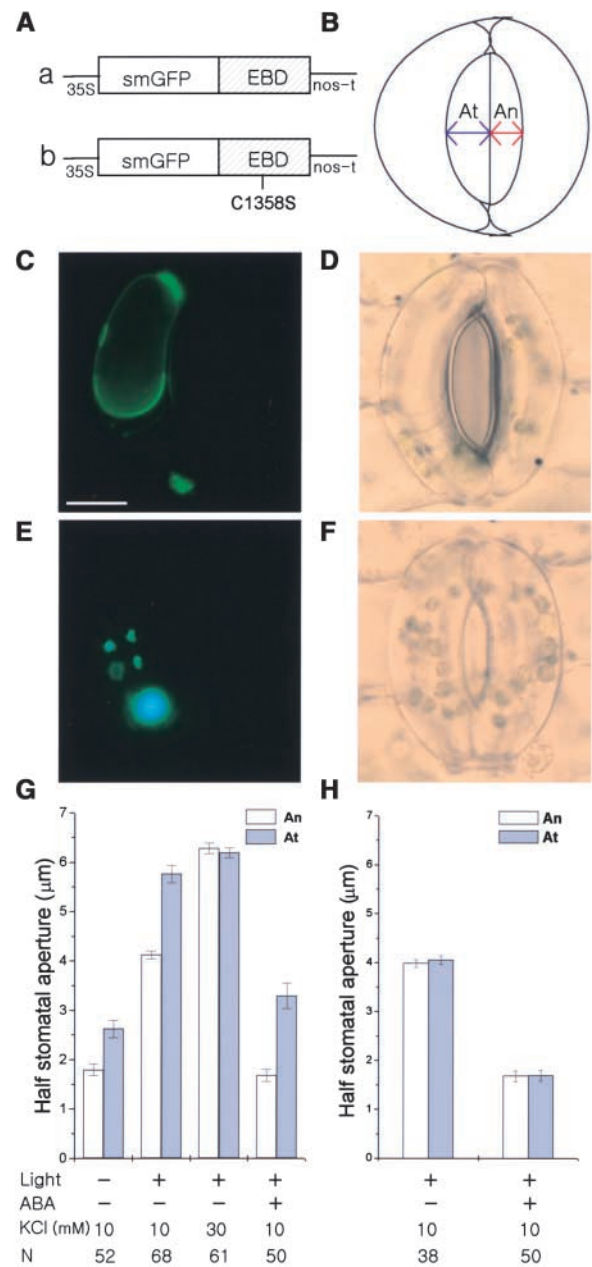
Inna Guterman, Moshe Shalit, Naama Menda, Dan Piestun, Mery Dafny-Yelin, Gil Shalev, Einat Bar, Olga Davydov, Mariana Ovadis, Michal Emanuel, Jihong Wang, Zach Adam, Eran Pichersky, Efraim Lewinsohn, Dani Zamir, Alexander Vainstein, and David Weiss. (2002). Rose Scent: Genomics Approach to Discovering Novel Floral Fragrance-Related Genes. *Plant Cell* **14**, 2325–2338.

On page 2333, the password for the online petal EST databases of *Clarkia breweri* was printed incorrectly. The correct password is “breweri.”

Continued on next page

Ji-Yul Jung, Yong-Woo Kim, June M. Kwak, Jae-Ung Hwang, Jared Young, Julian I. Schroeder, Inhwon Hwang, and Youngsook Lee. (2002). Phosphatidylinositol 3- and 4-Phosphate Are Required for Normal Stomatal Movements. *Plant Cell* **14**, 2399–2412.

On page 2403, information was mistakenly deleted at the bottom of Figure 4. The complete figure is printed below.



Corrections

Plant Cell 2002;14;2975-2976

DOI 10.1105/tpc.cor244

This information is current as of December 18, 2012

Permissions	https://www.copyright.com/ccc/openurl.do?sid=pd_hw1532298X&issn=1532298X&WT.mc_id=pd_hw1532298X
eTOCs	Sign up for eTOCs at: http://www.plantcell.org/cgi/alerts/ctmain
CiteTrack Alerts	Sign up for CiteTrack Alerts at: http://www.plantcell.org/cgi/alerts/ctmain
Subscription Information	Subscription Information for <i>The Plant Cell</i> and <i>Plant Physiology</i> is available at: http://www.aspb.org/publications/subscriptions.cfm